

Haverigg Primary News

Friday 19th June 2026



What colour ribbon will it be this year?

We are hoping for a better day on Tuesday so we can run our annual sports day. **Start time is 12.30pm.** Children will require a T Shirt colour appropriate to their house. Slips have gone home with children last week. If you are unsure which house they belong to please ask their class teacher. If the weather is sunny - please remember sunhats and sun cream! The Lighthouse Centre team will be there with refreshments. As we did last year, we would love to see as many parents / grandparents wearing the same colour top as their children to help cheer their house along! **We know you won't let us down!**

SPORTS DAY Tuesday 23rd June Haverigg Cricket Club



Year 1 had a wonderful trip to Muncaster on Monday and they were very lucky with the weather. They became time travellers, learning the history of Muncaster Castle over the years and impressing the staff by answering lots of tricky questions! Following that they enjoyed the fabulous owl display, quickly ducking as they flew past their heads! In the afternoon they ran off some steam in the play park then relaxed in the gardens to sketch the castle. All in all, a lovely day!



See Page 4 for details



Congratulations to this week's Lighthouse Winners

Reception Miss Blackburn	Grayson - for blowing us away with his reading and writing. This week it feels like something has clicked with Grayson and he is now showing so much more confidence in his own abilities, especially with his reading. He is also such a kind and helpful member of the reception class and we are so proud of him. Keep up the hard work!
Year 1 Miss Leece	Elliott O - for fantastic listening and following of instructions whilst making sculptures this week. You really thought about how you wanted to make your sculpture and thought about what you were using. Well done Elliott!
Year 2 Mrs Redhead	Arthur - he has worked so hard this year and has taken so much time and effort to Improve his writing skills. Yesterday he had the biggest smile on his face when he sat and wrote his sentences with the most beautiful letter formation.
Year 3 Mr Knowles	Libby - so many adults in school have commented how amazing Libby is, working so hard in maths, extending her writing and doing some great creative work in computing. Well done!
Year 4 Miss Usher	Joseph - Joseph is someone who could easily win the lighthouse every week. Whatever job he is given to do .he works hard and will give it 100%. Not only this, he is someone who can be relied upon to help around the classroom in a sensible and trustworthy manner. He has been taking his role of helping sort the class football sweep very seriously too. Thank you Joseph.
Year 5 Miss Marinovich	Louie - for working extremely hard to improve his writing all year and this week has done some fantastic writing. Louie, we are so proud of the determination that you have shown. You have not given up and it shows. Well-done and keep it up
Year 6 Miss Musgrave	Kobey - for always showing such kindness and tolerance. He has a lovely relaxed attitude and always there to boost class morale just when we need it! Thank you Kobey
Music Award Mrs Cullen	Austin - for outstanding brass playing and being happy to challenge himself. Well done!

At Haverigg Primary School we take the safety and welfare of your children very seriously. If you have any concerns regarding the safety and wellbeing of any children at Haverigg school please speak to Mrs Narongchai (our designated safeguarding leader), or Miss Musgrave / Mrs Redhead, (our deputy safeguarding leaders), in her absence.

Presentation Assemblies 2026

Friday 10th July 2026 - In the school hall

Reception & Year 1	9.00am - 10.00am (2 guests per family)
Year 2 & 3	10.30am - 11.30am (2 guests per family)
Year 4 & 5	1.15pm - 2.15pm (2 guests per family)
Year 6	2.30pm onwards (4 guests per family)

Lunch with Loved Ones - W/C 29th June

Deadline to place orders is Friday 19th June. Monday is now full and very limited availability on Wednesday. Still places for Tuesday, Thursday and Friday if you are quick! Confirmation slips have been sent home this week, once you have received this, please make your £5 per adult meal payment at the school office - cash only, thank you.

Next week's important dates

- Tuesday 23rd - Sports day
- Wednesday 24th - Year 5 to Low Bank Ground
- Friday 26th - Years 4 and 5 to Science Fayre at Whitehaven

Marbleous

House point winners:

Ethan C, Kobey, Lena, Pippa M, Eden, Elliott O, Kaelan, Bella, Miles, Amelia, Austin, Joseph, Rory, Lily K, Jack F, Wyatt, Millie, Anderson, Ella, Junior x 2 and the whole of Year 6.

Well done everyone, you are all Marbleous!

Attendance Matters



Every Day Counts...

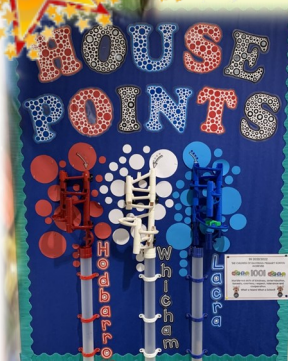
What is considered good attendance? Regular and punctual attendance is essential for effective learning, promoting positive relationships and developing good attitudes to education. **A child's attendance at school is expected to be 96% and above.** Anything that is below this needs to be addressed by school to ensure attendance improves. We need to ensure that all children attend school regularly as it is important for friendships and academic progress/success.

Key daily timings:

- 8:50 to 9:00 → Register takes place
- After 9:00 → Late mark in register
- After 9:30 → Unauthorised ab-

Weekly Attendance Report

Reception	99%
Year 1	90%
Year 2	97%
Year 3	92%
Year 4	98%
Year 5	99%
Year 6	96%



Have Your Say in the Big Future Survey!



What do you think about your school, your community, and your future?

The Children's Commissioner's Big Future Survey is your chance to tell adults what matters most to you.

The Children's Commissioner is Dame Rachel de Souza and it is her job to hear what children think, her survey asks questions to find out children's views. She feels it is important for children to have their say by answering her questions.

There are no right or wrong answers – she just wants to hear your ideas and opinions. By taking part, you can help make things better for children and young people like you across the country.

Your voice is important, and every answer counts. So please take a few minutes to complete the survey and help shape your future!

Thank you.

Complete your survey at:

<https://www.smartsurvey.co.uk/s/TheBigFuture/>

We will also send the link via text to parents

Or scan the QR code



Haverigg School

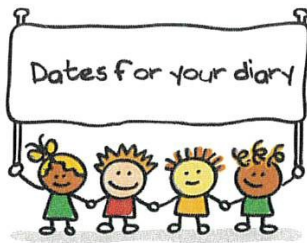


Friday 10th July 2026

6pm – 7.30pm

At Haverigg School

Admission: £2.50, £4 for 2 siblings, £5 a family



HAVERIGG PRIMARY SCHOOL

DIARY DATES

(updated 5th June 2026)

June 2026

Monday 1st	Back to school
Wednesday 3 rd – 5th	Year 6 London residential trip
Tuesday 9th	Year 6 STEAM event at Beggar's Theatre
Monday 15 th	Year 1 trip to Muncaster
Thursday 18th	Sports Day (weather permitting)
Friday 19th	Year 5 day at Millom school
Wed 24 th	Year 5 trip to Low Bank Ground Coniston
Friday 26 th	Years 4 and 5 to Science Fayre at Whitehaven
WC 29th	LCL Lunch with Loved Ones
Tuesday 30th	Year 6 John Ruskin Induction Day
	Parent Open Evening for new Reception intake (September 2026) 5pm

July 2026

Thursday 2nd	Year 3 trip to Muncaster
	Year 6 Transition Day at Millom School
Friday 3rd	Year 6 Transition – Den Building at Blackcombe School
Monday 6th	Year 6 Beach Barbeque
Tuesday 7th	Year 2 trip to Lakeland Maze
Wednesday 8th	Advanced Brass Group at Millom Palladium
Friday 10th	Presentation Assemblies
	FoHS School Disco
Monday 13th	Lighthouse Centre BINGO fundraiser for children (within school hours)
Tuesday 14th	Author Visit – Tom Palmer
Thursday 16th	Year 4 trip to Low Bank Ground Coniston
	Year 6 Beach Barbeque (reserve date)
Friday 17th	End of term (1.15pm finish)

Haverigg School 3 Week Menus from 20th April 2026



Week 1		
Monday	Pasta Bolognese, Garlic Bread and Sweetcorn	Chocolate Crunch and Vanilla Sauce
Tuesday	Chunky Chicken in a Tomato Sauce with Rice and Naan Bread	Meringue and Fruit Salad
Wednesday	Roast Pork, Yorkshire Pudding, Mash / Pasta and Vegetables	Gingerbread and Custard
Thursday	Battered or Plain Chicken Fillet Baguette with Diced Potatoes, Carrot and Cucumber Sticks	Victoria Sponge Cake
Friday	Fishy Ships, Chips, Baked Beans / Peas	Fruit Jelly and Ice-cream
	Daily: Jacket Potato with Butter/Cheese/Beans/Tuna OR Sandwich – Cheese/Ham/Tuna/Salad	Daily: Fruit Yoghurts Fresh Fruit
Week 2		
Monday	Mild Chicken Korma, Rice and Naan Bread	Lemon Drizzle Cake
Tuesday	Arrabiata Pasta Sauce (cheese optional), Crusty Bread, and Green Salad	Shortbread and Drink of Milk
Wednesday	Roast Beef, Yorkshire Pudding, Mash / Pasta and Vegetables	Chocolate Pear Marble Cake and Custard
Thursday	Pizza Wrap, Red Pesto Pasta and Sweetcorn	Melting Moment Biscuit
Friday	Fishy Ships, Chips, Beans / Peas	Waffle with Fruit Salad and Ice-cream
	Daily: Jacket Potato with Butter/Cheese/Beans/Tuna OR Sandwich – Cheese/Ham/Tuna/Salad	Daily: Fruit Yoghurts Fresh Fruit
Week 3		
Monday	Sausage Baguette, Wedges, Carrot and Cucumber Sticks	Iced Sponge Cake
Tuesday	Pasta in a sauce (cheese optional), Garlic Bread and Salad	Scotch Pancake with Bananas and Ice-cream
Wednesday	Roast Chicken with Stuffing, Mash / Pasta and Vegetables	Chocolate Orange Cake and Custard
Thursday	Meatballs in Gravy, Mash / Pasta and Sweetcorn	Fruit Scone with Jam (optional)
Friday	Fishcake, Chips, Beans / Peas	Chocolate Chip Cookie and Milk
	Daily: Jacket Potato with Butter/Cheese/Beans/Tuna OR Sandwich – Cheese/Ham/Tuna/Salad	Daily: Fruit Yoghurts Fresh Fruit

Please note: any children with a food intolerance can still order the main meal and pudding. If applicable, the kitchen staff will adjust the meal according to their intolerance e.g. dairy.

Thank you

HAVERIGG PRIMARY SCHOOL

2026

JANUARY						
S	M	T	W	Th	F	S
				1	2	3
4	5	6	7	8	9	10
11	12	13	14	15	16	17
18	19	20	21	22	23	24
25	26	27	28	29	30	31

FEBRUARY						
S	M	T	W	Th	F	S
1	2	3	4	5	6	7
8	9	10	11	12	13	14
15	16	17	18	19	20	21
22	23	24	25	26	27	28

MARCH						
S	M	T	W	Th	F	S
1	2	3	4	5	6	7
8	9	10	11	12	13	14
15	16	17	18	19	20	21
22	23	24	25	26	27	28
29	30	31				

APRIL						
S	M	T	W	Th	F	S
			1	2	3	4
5	6	7	8	9	10	11
12	13	14	15	16	17	18
19	20	21	22	23	24	25
26	27	28	29	30		

MAY						
S	M	T	W	Th	F	S
					1	2
3	4	5	6	7	8	9
10	11	12	13	14	15	16
17	18	19	20	21	22	23
24	25	26	27	28	29	30
31						

JUNE						
S	M	T	W	Th	F	S
	1	2	3	4	5	6
7	8	9	10	11	12	13
14	15	16	17	18	19	20
21	22	23	24	25	26	27
28	29	30				

JULY						
S	M	T	W	Th	F	S
			1	2	3	4
5	6	7	8	9	10	11
12	13	14	15	16	17	18
19	20	21	22	23	24	25
26	27	28	29	30	31	

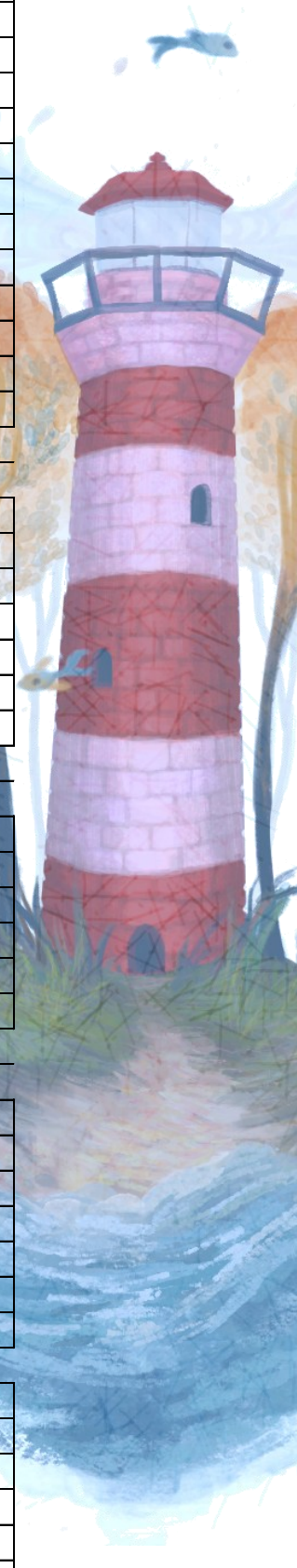
AUGUST						
S	M	T	W	Th	F	S
						1
2	3	4	5	6	7	8
9	10	11	12	13	14	14
16	17	18	19	20	21	22
23	24	25	26	27	28	29
30	31					

SEPTEMBER						
S	M	T	W	Th	F	S
		1	2	3	4	5
6	7	8	9	10	11	12
13	14	15	16	17	18	19
20	21	22	23	24	25	26
27	28	29	30			

OCTOBER						
S	M	T	W	Th	F	S
				1	2	3
4	5	6	7	8	9	10
11	12	13	14	15	16	17
18	19	20	21	22	23	24
25	26	27	28	29	30	31

NOVEMBER						
S	M	T	W	Th	F	S
1	2	3	4	5	6	7
8	9	10	11	12	13	14
15	16	17	18	19	20	21
22	23	24	25	26	27	28
29	30					

DECEMBER						
S	M	T	W	Th	F	S
		1	2	3	4	5
6	7	8	9	10	11	12
13	14	15	16	17	18	19
20	21	22	23	24	25	26
27	28	29	30	31		



Inset

Holiday dates Spring Term starts 5th January 2027



HAVERIGG PRIMARY SCHOOL

Atkinson Street

Haverigg

Cumbria LA18 4HA

Tel: 01229 772502

e-mail: admin@haverigg.cumbria.sch.uk

www.haverigg.cumbria.sch.uk

Headteacher: Mrs M Narongchai

Attendance matters

24th October 2025

Dear parents and carers,

This academic year we have once again had increasing numbers of families taking children out of school for holidays during term time. As you will all be aware, schools must consider enforcement action if a child/young person has 10 or more unauthorised sessions (equivalent to five days). While schools and local authorities will generally offer support to improve attendance first, persistent unauthorised absences or term-time holidays may result in a Fixed Penalty Notice or prosecution.

As part of our ongoing attendance monitoring and in line with the Cumberland attendance strategy, we will now be passing on attendance casefiles to the local authority where we feel the threshold has been met for fixed term penalty.

Reminder of Attendance expectations:

- Ensure your child/young person attends every day the school is open; except when a legal reason applies
- Notify the school as soon as possible when your child/young person is unexpectedly absent
- Book any medical appointments around the school day where possible
- Only request leave of absence in exceptional circumstances and do so in advance (please note: family holidays are not generally considered exceptional circumstances and all leave of absence requests are considered at the headteacher's discretion)

Please also be aware that taking your child out of school after registration in the afternoon will still count as an unauthorised session as they are not in school during the afternoon.

Head teacher

CHANGES TO FINES FOR UNAUTHORISED ABSENCES

With the introduction of the new National Framework for penalty notices, the following changes will come into force for fixed penalty notice fines issued for unauthorised absences recorded by schools after 19 August 2024.

Fixed Penalty Notices are issued in lieu of prosecution. The decision on whether to issue an FPN or prosecute rests with the Local Authority and is made on a case-by-case basis.

National threshold

There will be a single, consistent national threshold for when a penalty notice must be considered by all schools in England of 10 sessions (usually equivalent to five full school days) of unauthorised absence within a rolling 10 school week period.

For example: a five-day holiday would meet the national threshold.

The 10-school week period can span different terms or school years.

Who may be fined?

Penalty notice fines are issued to each parent who allows their child/young person to be absent from school.

For example: three siblings absent for term time leave would result in each parent who allowed the holiday receiving three separate fines.

First offence

The first time a penalty notice is issued for an unauthorised term time holiday, the fine amount will be:

£80 per parent, per child/young person if paid within 21 days, increasing to £160 if paid between days 22-28.

Second offence (within three years)

The second time a penalty notice is issued for unauthorised absence, the amount will be: £160 per parent (who allowed the holiday), per child/young person, payable within 28 days.

Third offence and any further offences (within three years)

The third time an offence is committed, a penalty notice will not be issued and local authorities will need to consider other available measures to address the absence concerns.

This may mean that cases are presented before a Magistrate's Court.

Prosecution can result in criminal records and fines of up to £2,500 and/or a term of imprisonment not exceeding three months.

Please note any monies collected through fines come back to Cumberland Council to facilitate attendance support and not to schools.



POMS Cluster Attendance Agreement 2025 - 2026

Guidance on authorised term-time pupil absence

The Education Regulations 2013 [aka, the Regulations] which came into force on 1 September 2013, made it clear that headteachers may not grant any leave of absence during term time unless "exceptional circumstances" prevail. The regulations also state that headteachers should determine the number of school days a pupil can be away from school if they grant a leave request because of "exceptional circumstances".

The fundamental principles for defining "exceptional circumstances" are that they are 'rare, significant, unavoidable and short'.

POMS cluster Headteachers have worked together to agree some guiding principles for headteachers to consider when families request absence during term-time. This will ensure consistency across the cluster and ensure all schools are sending the same message surrounding the importance of attendance at school.

Guiding Principles

1. Term times are for education. Children and families have 175 days off school to spend time together, including weekends and school holidays. Headteachers will rightly prioritise attendance. The default school policy should be that absences will not be granted during term time apart from in "exceptional circumstances".
2. The decision to authorise a pupil's absence is wholly at the headteacher's discretion based on their assessment of and circumstances of each individual request. POMS Headteachers have worked collaboratively to agree a shared approach. Schools in the POMS cluster will follow these agreed principles.
3. If an event can be reasonably scheduled outside of term time, then it will not be authorised. Holidays are, therefore, not considered exceptional circumstances.
4. Absence from school to visit seriously-ill relatives or for bereavement of a close family member are usually considered to amount to 'exceptional circumstances', but for the funeral service not for extended leave.
5. Absences for important religious observances are often considered, but only for the ceremony and not for extended leave. This is intended for one-off situations rather than regular or recurring events
6. Schools may wish to take the needs of the families of service personnel into account if they are returning from long operational tours that prevent contact during scheduled holiday time.
7. Whilst as school settings we must make reasonable adjustments for pupils with special educational needs or disabilities in school time. Regarding attendance, we work closely with our colleagues from our local special schools. In line with their guidance, we would not consider requests that are based on holidays during quieter times.
8. Families may need time together to recover from a trauma or crisis.
9. POMS schools will consider a pupil's historical record of attendance when making absence-related decisions
10. It is important to note that headteachers can determine the length of the authorised absence as well as whether an absence is authorised.
11. Absence will only be authorised where proper request procedures have been followed and the permission given.
12. Tickets and/or other travel arrangements should not be booked prior to discussion with and agreement of the school.
13. Parents and Carers should not confuse telling the school about an absence with having permission.
14. Whether alternative care arrangements have been considered by the parent to limit the time away from school.
15. The impact on any interventions, assessments or referrals being undertaken with the child or family, for example, family support, social care assessments, CAMHS, SEN.
16. The potential impact that the absence will have on the child.

This guidance has been agreed by all schools in the POMS (Partnership of Millom Schools) cluster;

Parkview Nursery School
Millom Infant School
Black Combe Junior School
Haverigg Primary School
St James' Catholic Primary School
Thwaites Nursery & Primary School
Captain Shaw Nursey & Primary School

Haverigg Primary School's



Healthy Packed Lunch Policy



How to pack a well-balanced lunch box - focus on the food groups

To be in-line with the School Food Standards set by the Department for Education, we feel this is a very reasonable packed lunch policy and one which we would like all parents to work towards achieving **one small change at a time**. We do understand that some children struggle with change but, the healthier choices you can gradually make, the better your child's health will be.

Packed lunches should include:

- At least one portion of fruit and one portion of vegetables every day.
- Meat, fish, eggs, or a non-dairy protein (e.g. lentils, kidney beans, chickpeas, houmous or falafel) every day.
- Oily fish, such as salmon, at least once every three weeks.
- A starchy food such as any type of bread, pasta, rice, couscous, noodles, potatoes or another cereal every day.
- A dairy food such as milk, cheese, yoghurt, fromage frais or custard every day.
- A drink of water, fruit juice or smoothie (maximum portion 150ml), or semi-skimmed milk or skimmed milk, yoghurt or another milk drink.

Packed lunches can occasionally include:

- Meat products such as sausage rolls, individual pies, corned meat and sausages.
- Cakes and biscuits - but encourage your child to eat these as part of a meal and be mindful of appropriate portion sizes.

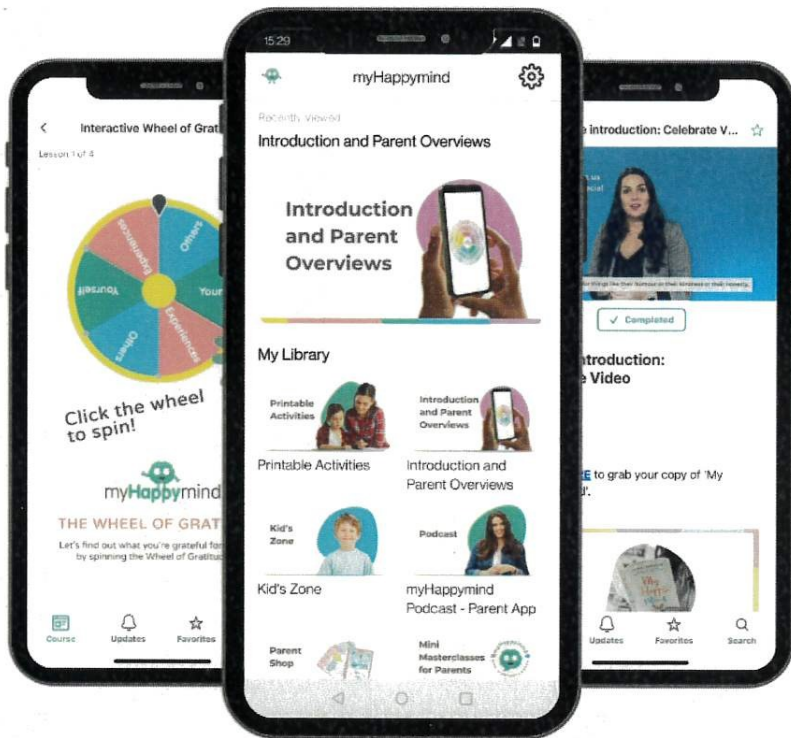
Packed lunches should not include:

- Nuts or nut butters (we do have children in school with allergies)
- Salty snacks such as crisps.
- Confectionery such as chocolate bars, chocolate-coated cereal bars, processed fruit bars and sweets.
- Sugary soft drinks, such as squash and fizzy drinks.





Download your FREE myHappy mind Parent App



...An online resource to support you and your family to learn more about how you can use myHappy mind to support your child.



myHappy mind for Parents

Exclusively for parents with children at a myHappy mind School or Nursery.



Learn all about what your children are learning in school



YOU WILL NEED THIS AUTHENTICATION CODE TO SIGN UP

112157



Pretty Things

PRESENTS A



FASHION *Show*

STYLE. CONFIDENCE. YOU.



FRIDAY

26TH JUNE 2026



7PM



**THE LIGHTHOUSE CENTRE
HAVERIGG**

£5
PER TICKET
♥

Includes ♥

A GLASS OF
WINE / FIZZ /
OR NON ALCOHOLIC



♥ *Good style. Good friends. Great night out!* ♥

TICKETS AVAILABLE FROM
THE LIGHTHOUSE CENTRE 01229 719910

MEDITATE

in the Lakes

Weekly Meditation Classes

A Daily Practice for Everybody

JUN 9 – JUL 16

ULVERSTON

AMBLESIDE 🕒 WED 11 AM

BARROW 🕒 THU 7 PM

GRANGE 🕒 WED 11 AM

KENDAL 🕒 THU 7.30 PM

MILLOM 🕒 TUE 10 AM

SILVERDALE 🕒 THU 10 AM

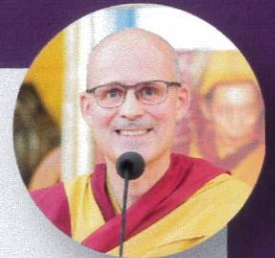
ULVERSTON Class

In the Temple for World Peace

Tuesdays 7.30 – 9pm | £7.50

with **Gen-la Kelsang Jampa**

the General Spiritual Director of the NKT-IKBU
and Resident Teacher of Manjushri KMC.



Book Now.

Buddha taught that virtue is a main cause of happiness. In this series, we will learn several virtuous practices which can be integrated easily with our everyday activities. By keeping a positive mind and a good heart in whatever we do, we will naturally live in harmony with others, and our daily life will become peaceful and happy.



MANJUSHRI KADAMPA MEDITATION CENTRE



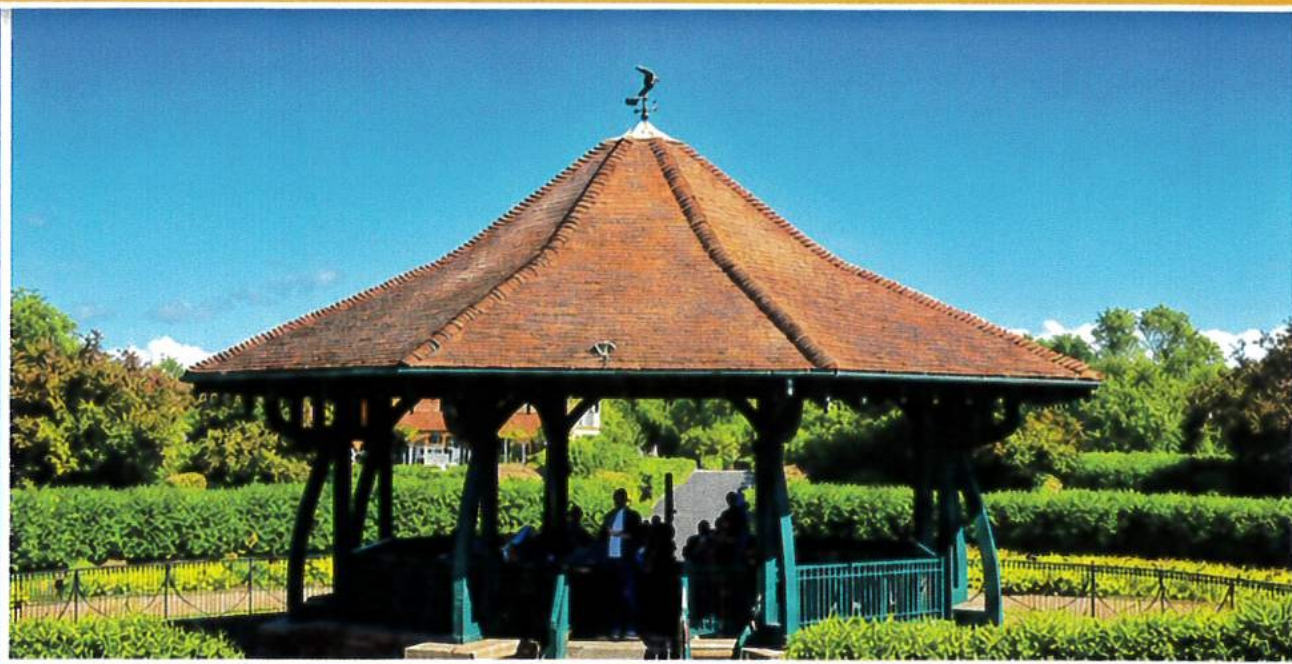
Manjushri KMC, Conishead Priory, Priory Road LA12 9QQ | 01229 584029 | info@manjushri.org | manjushri.org

MKMC is part of the New Kadampa Tradition - International Kadampa Buddhist Union • Registered Charity Number: 1015054

BRASS IN BARROW BANDSTAND

Summer 2026 Concert Series

Sundays • 2~4pm • Barrow Park Bandstand



Programme

31 May

Dalton Town Band

14 June

South Cumbria Brass Band

21 June

Flookburgh Band

28 June

Holborn Hill Royal
Brass Band Juniors

5 July

Askam Town Silver Band

12 July

Ulverston Town Band

Bring a chair. Bring a friend. Enjoy the music.

Sponsored by Barrow Town Council

MILLOM AMATEUR DRAMATIC SOCIETY

MADS

PRESENTS



A
Rhapsody
of
MUSICALS

WEDNESDAY 1ST JULY

THURSDAY 2ND JULY

FRIDAY 3RD JULY

★ AT 7PM ★

AT MILLOM SCHOOL

TICKETS ON SALE FROM THE HAIR GALLERY

ON SATURDAY 13TH JUNE ★

★ CHILDREN - £6

ADULTS/OAP - £10 ★

CASH ONLY